



Use the tape attached to measure your flaccid penis girth and length. Then use sizing chart below to calculate which Pacey Cuff size will suit you best.

Pacey Cuff Size Chart - Guide des tailles Pacey Cuff Pacey-Cuff - Maattabel		Circumference - Circonférence - Omtrek (cm)										
Length Longueur Lengte (cm)		5	6	7	8	9	10	11	12	13		
		3	SUCD - T 1								MUCD - T 2	LUCD - T 3
3												
3.5												
4												
4.5												
5												
5.5												
6												
6.5												
7												
7.5												
8												
8.5												
9												
9.5												
10												



NEW Compression thumb tab to help achieve your best fit ✓

Extra durable neoprene padding replaces foam ✓

Enhanced anti-pinch flap at strap guide improves skin protection ✓

6 - 8 month use ✓



Urine control with normal blood flow delivering comfort for extended wear.

Designed by a Vascular Surgeon for patients who want to take control of their urinary continence care.

Pacey Cuff™ is a urethral control device that controls urine leakage. Defining a new concept in control of continence.



Gradient Health & Technologies

• Solutions in Motion •



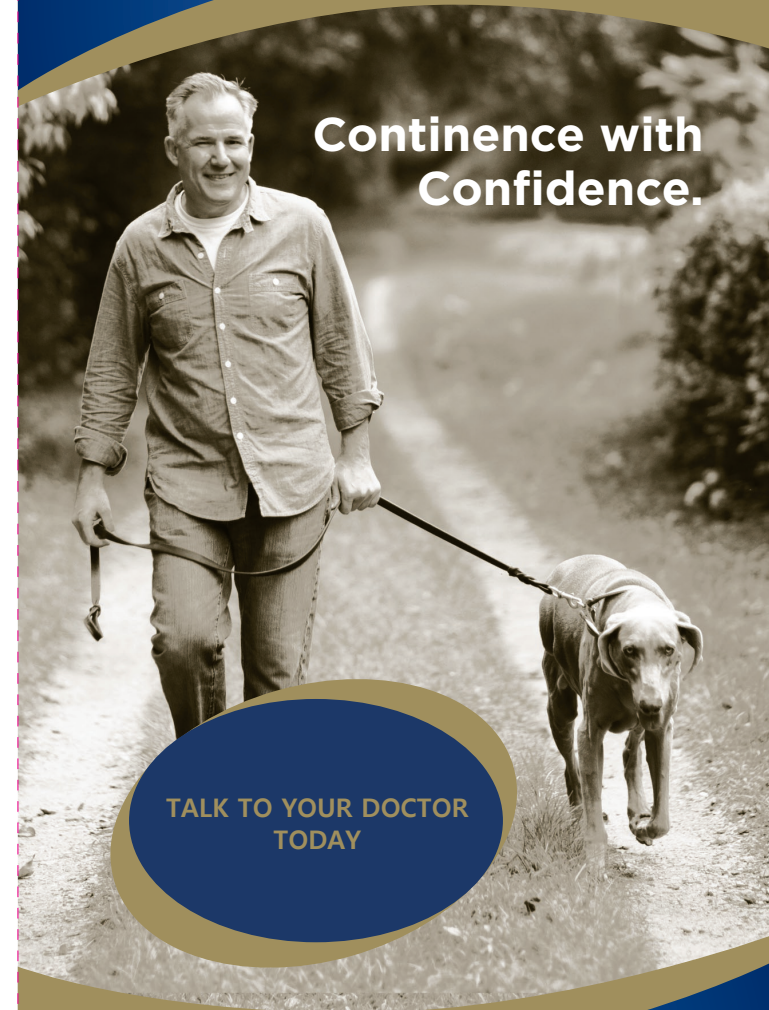
Exclusive Distributor in Singapore

[www.gradient-health.com](http://www.gradient-health.com)



PACEY CUFF™  
URETHRAL CONTROL DEVICE

Continence with Confidence.



TALK TO YOUR DOCTOR TODAY

+65 68295432

[www.gradient-health.com](http://www.gradient-health.com)

# **PACEY CUFF™** URETHRAL CONTROL DEVICE



## WHY IS THE PACEY CUFF DIFFERENT FROM OTHER DEVICES ON THE MARKET?

The Pacey Cuff is a specific Urethral Compression Device which is designed for compression of the urethra to minimize leakage and also to protect the dorsal penis circulation so that ischemic pain from blood vessel obstruction does not occur. Easily washed, it can be used in the shower or for swimming.

## HOW DO I KNOW WHAT SIZE OF PACEY CUFF TO ORDER?

Pacey Cuff comes in 3 sizing options depending on flaccid penis girth and length. Sizing the Pacey Cuff requires the user to make measurements of the penis and to use the sizing chart located overleaf. Some patients have found having 2 different sizes on hand to be effective for day or night use (usually less tension required at night).

## HOW OFTEN MUST I REPLACE THE PACEY CUFF?

We recommend you replace your Pacey Cuff every 4 months if used regularly. It is useful have 2 devices for convenience and because the devices are used throughout the day and at night if suitable.

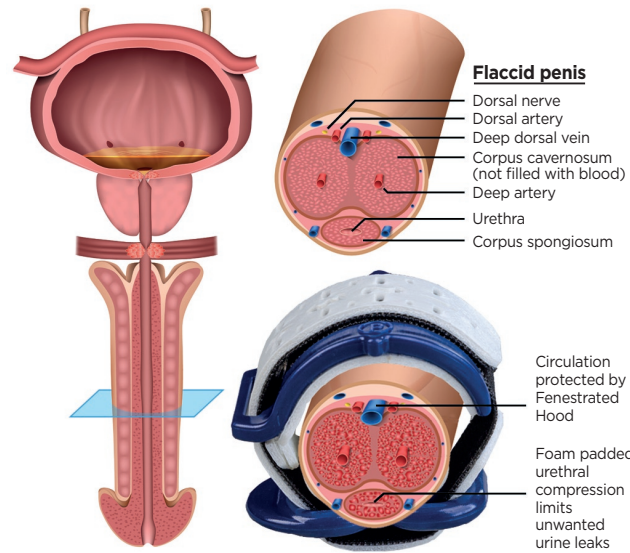
## ARE THERE ANY CONTRA-INDICATIONS FOR USING THE PACEY CUFF?

Skin infections may be a reason to avoid using the Pacey Cuff until treated. Follow the instructions of your physician. Also, co-morbidities may impact the use of the device and require discussion with your caregiver or physician.

- > Poor blood supply to the Pelvic area.
- > Diabetes may cause vascular disease, sensory loss, and skin issues.
- > Neurologic deficiency or drug use may limit use.

## ARE THERE ANY KNOWN SIDE EFFECTS OF PACEY CUFF USE?

The regular or continuous use of the Pacey Cuff may cause a modest enlargement of the Penis (slight oedematous swelling). There are no other known side-effects associated with the use of the Pacey Cuff when used correctly.



## CAN THE PACEY CUFF BE WORN CONTINUOUSLY THROUGHOUT THE DAY AND NIGHT?

Selected individuals who are alert, do not use Sleeping medications, and have no co-morbidities, may be suitable for continuous use up to 8 hours (in accordance with N.I.C.E. guidelines). Seek Physician advice. Otherwise it is recommended to limit usage to 60 minutes at a time with at least a 10 minute gap. The compression of the Pacey Cuff should be eased at night when there is less need for control.

## WHAT CAUSES THE OCCASIONAL DISCOMFORT ON THE LEFT SIDE OF THE DEVICE?

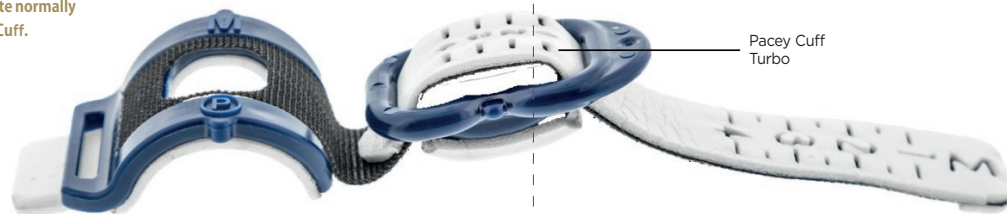
The skin may be trapped between the upper and lower parts upon closing the device. The solution is built into the Pacey Cuff where a pinch prevention foam flap prevents skin from becoming lodged between the two parts. The best policy is to be sure that the skin is not trapped each time you close the Pacey Cuff by inspecting the area. Ask about Pacey Cuff Sleeve for pinch prevention.

## I HAVE AN INTERMITTENT SLIGHT LEAKAGE PROBLEM WHILE USING THE CUFF, WHAT CAN I DO?

The Pacey Cuff has a unique degree of closure for each individual person. The number required to control urine flow is found by individual testing. The number, indicating pressure, can be increased if leaking occurs. A washable incontinence pant can be used in combination with the Cuff if needed to capture small intermittent leaks.

## HOW DO I ADJUST THE PACEY CUFF?

Pacey Cuff comprises a numbered adjustable strap mechanism with Velcro secure. Simply tighten or loosen the strap to achieve a comfortable level of urethral pressure that prevents unwanted urine leakage. The strap number allows you to replicate this tension consistently with each application. Simply loosen to urinate normally whilst wearing Pacey Cuff.



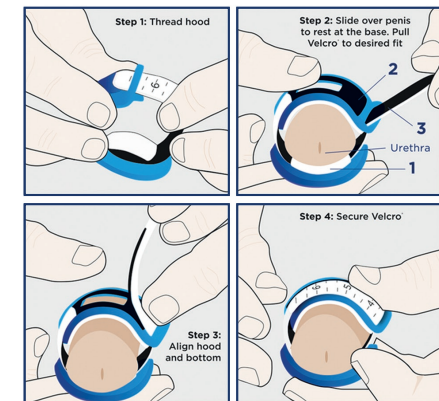
# **PACEY CUFF™** URETHRAL CONTROL DEVICE

Whatever the social occasion, be it a Wedding or a round of golf, Pacey Cuff gives you confidence to engage with comfort.

Designed by a Vascular Surgeon for patients who want to take control of their urinary continence care.

Pacey Cuff™ is a urethral control device that controls urine leakage. Defining a new concept in control of continence.

## INSTRUCTIONS FOR USE:



## PRODUCT FEATURES:

1. Urethral Pressure Pad™ blocks unwanted urine flow
2. Fenestrated Hood ensures normal blood flow
3. Velcro® strap provides comfortable custom fit

Patent pending. Pacey Cuff (PC), Urethral Control Device (UCD), Urethral Pressure Pad (UPP) are trademarks of Pacey MedTech Ltd. © 2017

**GIRTH**  
Measuring  
Tape

15  
14.5  
14  
13.5  
13  
12.5  
12  
11.5  
11  
10.5  
10  
9.5  
9  
8.5  
8  
7.5  
7  
6.5  
6  
5.5  
5

**PACEY CUFF™**  
URETHRAL CONTROL DEVICE

**P**

**GIRTH**  
**CM**